



Part 1 ■ Company Profile



Part 2 ■ Automotive Experience



Part 3 ■ Specialist Translation Services



Part 4 ■ Content Management



Part 5 ■ Added Value





Key facts and figures:

- **WIONET** – **W**orld **I**nformation **O**perating **N**etwork — multilingual translation and localization company
- Established in Korea in 1997
- Regional offices in Korea and Poland
- Global network of Partners and Vendors with proven capabilities and confirmed quality of services
- Qualified Teams in 35 Countries in all geographies
- Multilingual translation and localization services in over 45 languages



In-country language services. Over 45 combinations.

<p>Asian & Far East:</p> <ul style="list-style-type: none"> ▪ Korean ▪ Indonesian ▪ Japanese ▪ Chinese Simplified ▪ Chinese Traditional ▪ Malay ▪ Thai ▪ Vietnamese 	<p>American:</p> <ul style="list-style-type: none"> ▪ English American ▪ French Canadian ▪ Spanish Latin ▪ Portuguese Brazilian 	<p>West European (WE):</p> <ul style="list-style-type: none"> ▪ English UK ▪ French European ▪ German ▪ Greek ▪ Italian ▪ Portuguese European ▪ Spanish European ▪ Turkish 	<p>East European (EE):</p> <ul style="list-style-type: none"> ▪ Belarusian ▪ Bulgarian ▪ Croatian ▪ Czech ▪ Estonian ▪ Hungarian ▪ Latish ▪ Lithuanian ▪ Polish ▪ Romanian ▪ Russian ▪ Slovak ▪ Ukrainian
<p>Central Asian & Middle East:</p> <ul style="list-style-type: none"> ▪ Kazakh ▪ Daghestanis ▪ Arabic ▪ Farsi ▪ Urdu 		<p>North European (NE):</p> <ul style="list-style-type: none"> ▪ Danish ▪ Dutch ▪ Finnish ▪ Norwegian ▪ Swedish 	



Anywhere... Any language...

** This list is not exhaustive. Please contact us for details.*



Turnkey information services

Language

- Multilingual translation
- Technical translation
- Software localization
- Linguistic style
- Terminology
- Consultancy

Technology

- Consultancy services
- Software development
- Content management
- Adobe AEM
- Programming
- Big Data & analytics

Marketing

- Transcreation
- Creative services
- Campaign management
- Social media

Publishing

- Graphic design
- Desk-top publishing
- Printing
- Distribution



Automotive sector

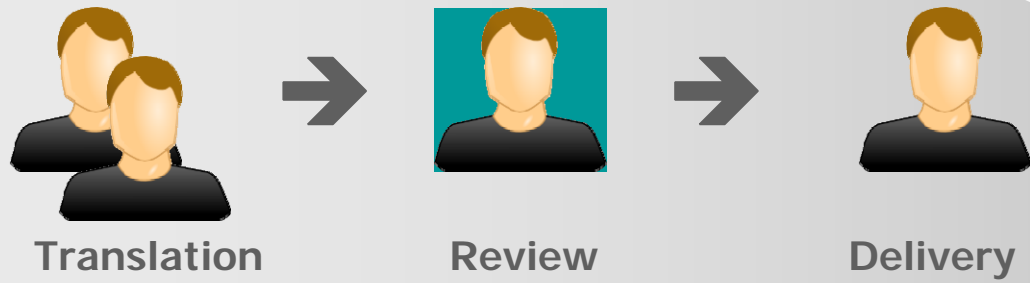


Company Profile

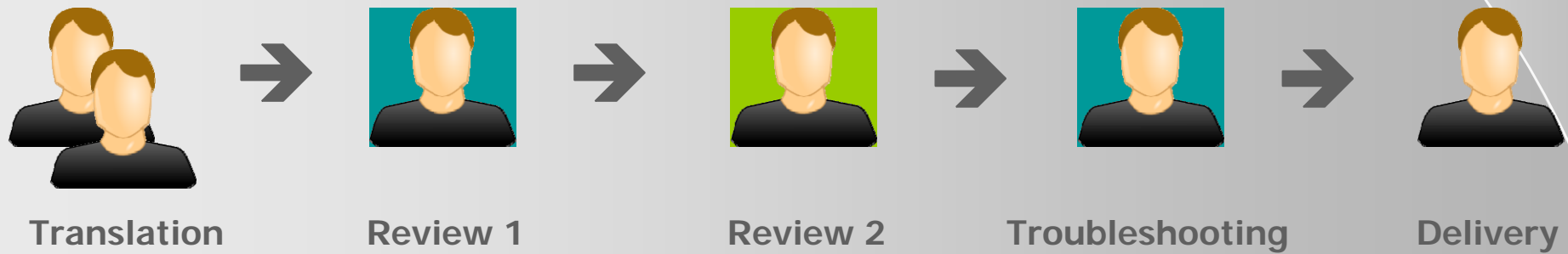
Unique 10-step localization workflow



Market standard translation and review workflow



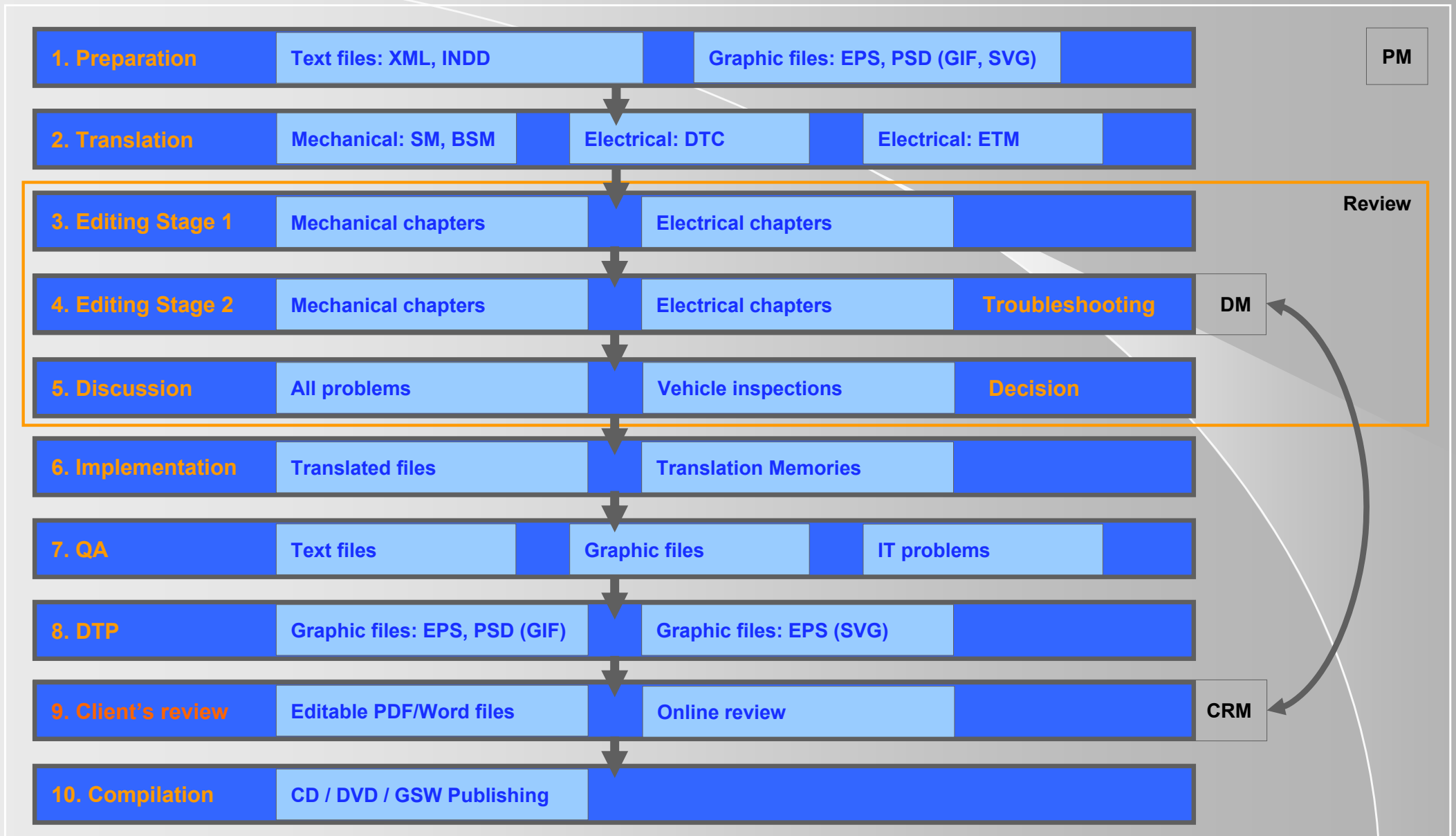
WIONET translation and review workflow





Company Profile

Unique 10-step localization workflow





Part 1 ■ Company Profile



Part 2 ■ Automotive Experience



Part 3 ■ Specialist Translation Services



Part 4 ■ Content Management



Part 5 ■ Added Value





Automotive project experience

Automotive clients



HYUNDAI The Power to Surprise

Brands: Hyundai, Kia
Languages: 5 European



Mercedes-Benz

Brands: Mercedes
Languages: 9 European, 6 Asian



Brands: Mitsubishi
Languages: 2 European



INFINITI
EMPOWER THE DRIVE

Brands: NISSAN, Infiniti
Languages: 6 European



IVECO

Brands: FIAT, IVECO
Languages: 4 European



Automotive project experience

Selected projects — Workshop Manuals



Poland

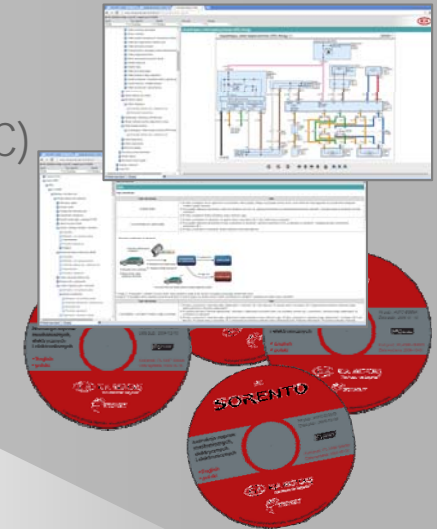
- Exclusive contracts with Hyundai, Kia and Mitsubishi
- 100+ publications localized to date (SM, ETM, BRM, DTC)
- Localized content available online (90+ end-users)

Czech Republic and Slovakia

- Exclusive contract with Kia since 2014
- 8 publications localized to date, 4 more in progress (SM, ETM, BRM, DTC)
- Localized content available online (100+ end-users)

Hungary

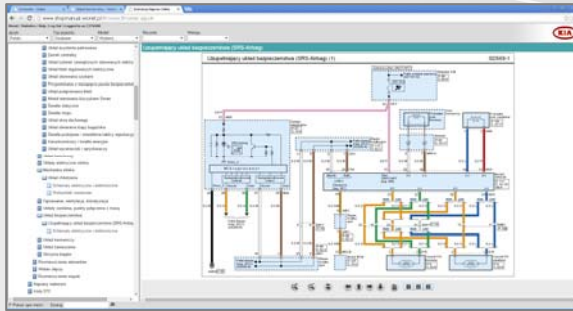
- Exclusive contract with Kia since 2014
- 6 publications localized to date, 3 more in progress (SM, DTC)
- Localized content available online (70+ end-users)





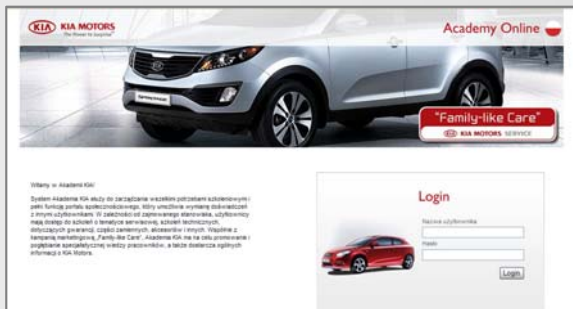
Automotive project experience

Selected projects — Online



WIONET Shop Manual Online

- Developed GSW European mirror site to support Workshop Manuals publication
- Developed dedicated CMS system for offline and online content management



European Learning Management System (ELMS)

- Localization to Polish and Italian
- Assisted with development, implementation and testing
- Provided end-user support (hotline services)



MyKia CRM System

- Localization to Polish
- Currently assisting with development, implementation and testing



Automotive project experience

Selected projects — Online



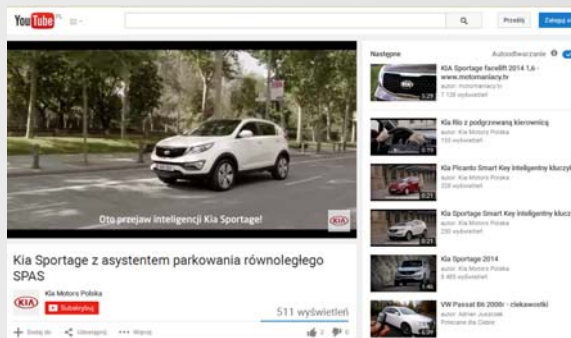
Online content management and localization

- External microsites (hosted locally at Kia or WIONET servers)
- Model Specials (Sitecore)
- Experience pages (Sitecore)
- PIP pages (Sitecore)
- Showrooms (KCC Backoffice)



Facebook profiles management and localization

- Apps, games, contests
- Examples include: Roar-o-meter, GT Ride, Marbella
- Posts, notes



Multimedia

- Videos post production: voice over and subtitles
- Banners



Automotive project experience

Selected projects — Owner's Manuals, Warranty Booklets



Key facts and figures:

- Development, translation, DTP and printing of Owners' Manuals for several brands
- Specialist consultancy services High quality offset or digital printing services (color or black)
- 75+ publications completed to date





Automotive project experience

Selected projects — Multimedia



- Model promotional videos
- Corporate promotional videos
- Training videos





Part 1 ■ Company Profile



Part 2 ■ Automotive Experience



Part 3 ■ Specialist Translation Services



Part 4 ■ Content Management



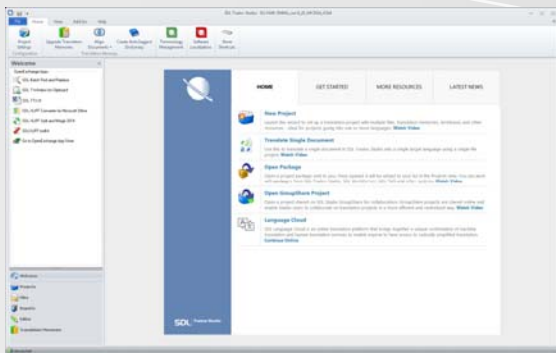
Part 5 ■ Added Value





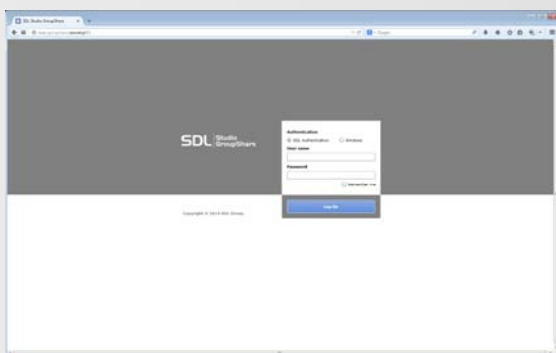
Specialist Translation Services

Computer Aided Translation Tools (CAT)



SDL Trados Studio

- Desk-top client application allowing to share server resources
- Complete working environment for project managers, translators and editors
- Wide variety of advanced functions allowing to streamline translation workflow



SDL GroupShare

- Server-based solution allowing to manage Clients, users, organizations, projects, Translation Memories (TMs) and termbases (TBs)
- Allows to centralize the resources in order to make them available for various project participants
- Allows to monitor and control every step of the workflow

SDL API

- Allowing integration with third party applications



Computer Aided Translation Tools (CAT)

Project structure



SDL Trados Studio - PL-KMP-SM053_Sorento_UM_MY2015

File Home View Add-Ins Help

Project Settings Open For Translation Open For Review Open For Sign-off Batch Tasks Explore Containing Folder Add Files Delete Files Check Out Get Latest Version Create Return Package Create Project Package Create Studio 2009 Package File details layout

Configuration Open File Actions GroupShare Packages Layout

Files

Polish (Poland)

Project folders

- PL-KMP-SM053_Sorento_UM_MY2015
 - BRM
 - DTC
 - SM
 - SM_Images
 - My Tasks
 - Sent Tasks

Include subfolders

Welcome Projects Files Reports Editor Translation Memories

Name	Words	Status	Progress	Size	Path	Local State	Checked Out To
2015_4 Wheel Drive (4WD) System_MMC_ds_10.xml.sdlxliff	2389	Signed Off	100%	663 KB	\SMA	Out-of-date	(none)
2015_Automatic Transaxle System_MMC_tr_100.xml.sdlxliff	9064	Signed Off	100%	3 200 KB	\SMA	Out-of-date	(none)
2015_Automatic Transaxle System_MMC_tr_19.xml.sdlxliff	2285	Signed Off	100%	1 003 KB	\SMA	Out-of-date	(none)
2015_Automatic Transaxle System_MMC_tr_97.xml.sdlxliff	4220	Signed Off	100%	1 592 KB	\SMA	Out-of-date	(none)
2015_Automatic Transaxle System_MMC_tr_99.xml.sdlxliff	4381	Signed Off	100%	1 536 KB	\SMA	Out-of-date	(none)
2015_Body (Interior and Exterior)_MMC_bd_5.xml.sdlxliff	17373	Signed Off	100%	4 002 KB	\SMA	Out-of-date	(none)
2015_Body Electrical System_MMC_all_0.xml.sdlxliff	54701	In Translation	78%	14 086 KB	\SMA	Out-of-date	(none)
2015_Brake System_MMC_br_19.xml.sdlxliff	11050	Signed Off	100%	2 686 KB	\SMA	Out-of-date	(none)
2015_Clutch System_MMC_ch_2.xml.sdlxliff	2353	Signed Off	100%	659 KB	\SMA	Out-of-date	(none)
2015_Driveshaft and axle_MMC_ds_10.xml.sdlxliff	4511	Signed Off	100%	1 368 KB	\SMA	Out-of-date	(none)
2015_Emission Control System_MMC_en_127.xml.sdlxliff	1848	Signed Off	100%	466 KB	\SMA	Out-of-date	(none)
2015_Emission Control System_MMC_en_47.xml.sdlxliff	1558	Signed Off	100%	359 KB	\SMA	Out-of-date	(none)
2015_Emission Control System_MMC_en_80.xml.sdlxliff	1044	Signed Off	100%	313 KB	\SMA	Out-of-date	(none)
2015_Engine Control Fuel System_MMC_en_127.xml.sdlxliff	16610	Signed Off	100%	5 650 KB	\SMA	Out-of-date	(none)
2015_Engine Control Fuel System_MMC_en_365.xml.sdlxliff	28828	Signed Off	100%	9 396 KB	\SMA	Out-of-date	(none)
2015_Engine Control Fuel System_MMC_en_47.xml.sdlxliff	14376	Signed Off	100%	5 404 KB	\SMA	Out-of-date	(none)
2015_Engine Control Fuel System_MMC_en_80.xml.sdlxliff	10979	Signed Off	100%	4 232 KB	\SMA	Out-of-date	(none)
2015_Engine Electrical System_MMC_en_127.xml.sdlxliff	15807	Signed Off	100%	3 190 KB	\SMA	Out-of-date	(none)
2015_Engine Electrical System_MMC_en_365.xml.sdlxliff	15729	Signed Off	100%	3 031 KB	\SMA	Out-of-date	(none)
2015_Engine Electrical System_MMC_en_47.xml.sdlxliff	9605	Signed Off	100%	1 889 KB	\SMA	Out-of-date	(none)
2015_Engine Electrical System_MMC_en_80.xml.sdlxliff	6916	Signed Off	100%	1 541 KB	\SMA	Out-of-date	(none)
2015_Engine Mechanical System_MMC_en_127.xml.sdlxliff	19512	Signed Off	100%	4 778 KB	\SMA	Out-of-date	(none)
2015_Engine Mechanical System_MMC_en_365.xml.sdlxliff	22072	Signed Off	100%	5 350 KB	\SMA	Out-of-date	(none)
2015_Engine Mechanical System_MMC_en_47.xml.sdlxliff	22901	Signed Off	100%	6 008 KB	\SMA	Out-of-date	(none)
2015_Engine Mechanical System_MMC_en_80.xml.sdlxliff	18221	Signed Off	100%	4 575 KB	\SMA	Out-of-date	(none)
2015_General Information_MMC_all_0.xml.sdlxliff	3784	Signed Off	100%	946 KB	\SMA	Out-of-date	(none)
2015_Heating,Ventilation And Air Conditioning_MMC_ac_6.xml.sdlxliff	9745	Signed Off	100%	2 748 KB	\SMA	Out-of-date	(none)
2015_Maintenance_MMC_all_0.xml.sdlxliff	5077	Signed Off	100%	939 KB	\SMA	Out-of-date	(none)
2015_Manual Transaxle System_MMC_tr_101.xml.sdlxliff	2349	Signed Off	100%	754 KB	\SMA	Out-of-date	(none)
2015_Manual Transaxle System_MMC_tr_226.xml.sdlxliff	1835	Signed Off	100%	596 KB	\SMA	Out-of-date	(none)
2015_Restraint_MMC_ab_18.xml.sdlxliff	7403	Signed Off	100%	1 357 KB	\SMA	Out-of-date	(none)
2015_Steering System_MMC_st_12.xml.sdlxliff	2757	Signed Off	100%	811 KB	\SMA	Out-of-date	(none)
2015_Suspension System_MMC_ss_3.xml.sdlxliff	6780	Signed Off	100%	1 666 KB	\SMA	Out-of-date	(none)
Restraints_additional.xlsx.sdlxliff	206	Translated	100%	48 KB	\SMA	Up-to-date	(none)

File Details

No files selected.

File Details Analysis Statistics Confirmation Statistics Task History File Attributes

danuta.fiett



Computer Aided Translation Tools (CAT)

Translation workflow



Our standard translation workflow includes the following steps:

- Analysis and preparation
- Translation
- 3-stage review completed by 2 independent reviewers
- Changes implementation

Download Specific Version

Choose a version to download:

Version	Name	Created/Checked in	Created/Checked in by	Last Modified	Comment
3	2015_Fuel_System_MMC_en_341_Unique.xml.sdlxliff	2015-05-21 15:51:41	Danuta Fielt	2015-05-21 15:51:34	
4	2015_Fuel_System_MMC_en_341_Unique.xml.sdlxliff	2015-06-28 22:57:08	Roman Sestak	2015-06-28 22:56:42	
5	2015_Fuel_System_MMC_en_341_Unique.xml.sdlxliff	2015-08-19 13:14:47	Josef Kaplan	2015-08-19 13:14:20	
6	2015_Fuel_System_MMC_en_341_Unique.xml.sdlxliff	2015-08-25 18:01:26	Břetislav Dolejší	2015-08-25 17:59:28	
7	2015_Fuel_System_MMC_en_341_Unique.xml.sdlxliff	2015-09-01 07:50:07	Josef Kaplan	2015-09-01 01:27:19	
8	2015_Fuel_System_MMC_en_341_Unique.xml.sdlxliff	2015-09-08 15:15:12	Roman Sestak	2015-09-08 15:14:45	

Buttons: Help, Download, Cancel



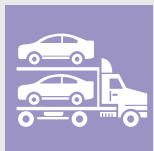
Part 1 ■ Company Profile



Part 2 ■ Automotive Experience



Part 3 ■ Specialist Translation Services



Part 4 ■ Content Management



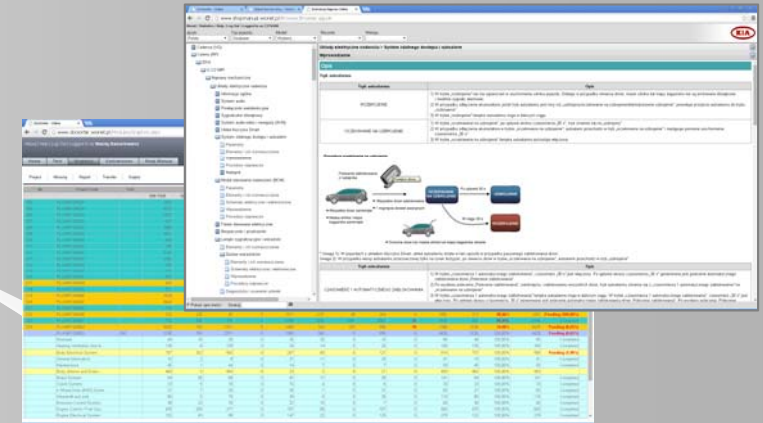
Part 5 ■ Added Value





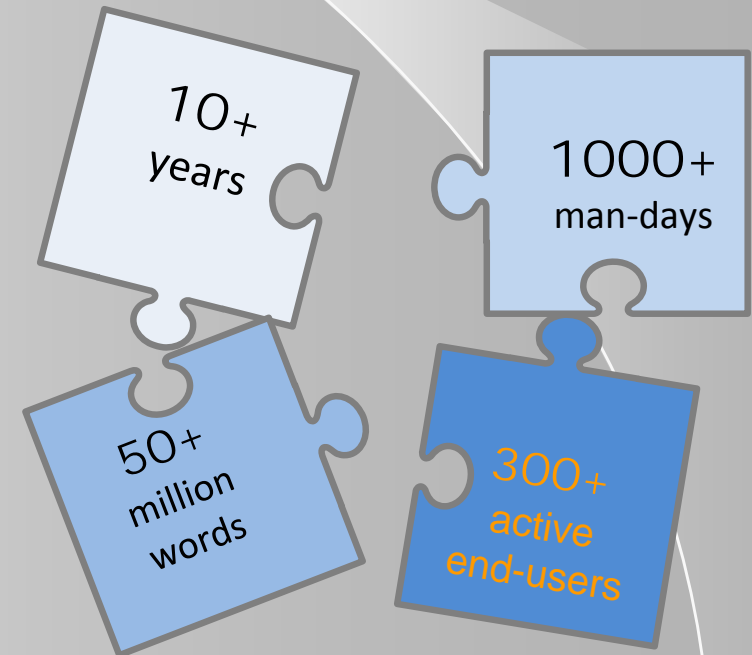
WIONET existing Content Management Systems

- WIONET Shop Manual — front end
- WIONET DocSorter — back end



Key facts and figures

- Continuous development since 2007
- 1000+ man-days of development work
- 400+ man-days of testing
- Successfully rolled out in 4 countries: PL, CZ, SK, HU
- 50+ million words of localized content
- 300+ active end-users





WIONET DocSorter

In-house developed CMS system to support Workshops Manuals localization

Module 1: **Text**

Key functionality: file structure analysis, sorting, splitting, merging and structure recreation, validation, managing internal duplicates, reusing archive content, reporting

Supported formats: XML, HTML

Module 2: **Graphics**

Key functionality: reference links analysis, managing internal/external duplicates, qualification wizard, synchronization, reporting

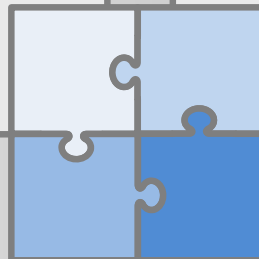
Supported formats: EPS, PSD, PDF, JPG, PNG, GIF, SWF

Module 3: **Conversions**

Key functionality: customized format conversions designed to enhance production processes

Module 4: **Shop Manual**

Key functionality: version control for production and test websites





Step 1 →

Split into groups and configurations — enable teamwork

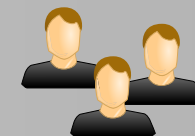
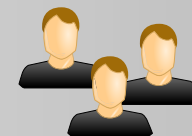
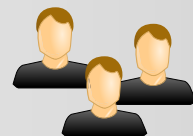
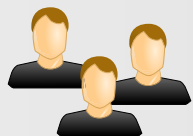


GI	General Information	100%
EM	Engine Mechanical 1	100%
EM	Engine Mechanical 2	100%
EM	Engine Mechanical 3	100%
EM	Engine Mechanical 4	100%
EE	Engine Electrical 1	100%
EE	Engine Electrical 2	100%
EE	Engine Electrical 3	100%
EE	Engine Electrical 4	100%

FL	Fuel System 1	100%
FL	Fuel System 2	100%
FL	Fuel System 3	100%
FL	Fuel System 4	100%
EC	Emissions Control 1	100%
EC	Emissions Control 2	100%
EC	Emissions Control 3	100%
EC	Emissions Control 3	100%

MT	Manual Transaxle 1	100%
MT	Manual Transaxle 2	100%
MT	Manual Transaxle 3	100%
AT	Automatic Trans. 1	100%
AT	Automatic Trans. 2	100%
DCT	Dual Clutch Trans.	100%
CH	Clutch System	100%
DS	Driveshaft & Axle	100%
SS	Suspension System	100%

GI	Steering System	100%
EM	Restraints	100%
EM	Brake System	100%
EM	Body Interior/Exterior	100%
EE	Body Electrical	100%
EE	HVAC	100%
TOC	Table of contents	100%





Step 2 →

Exclude internal duplicates



GI	General Information	100%
EM	Engine Mechanical 1	100%
EM		60%
EM		15%
EM		12%
EE	Engine Electrical 1	100%
EE		30%
EE		12%
EE		12%

FL	Fuel System 1	100%
FL		60%
FL		12%
FL		12%
EC	Emissions Control 1	100%
EC		100%
EC		100%
EC		100%

MT	Manual Transaxle 1	100%
MT		60%
MT		100%
AT		100%
AT		100%
DCT	Dual Clutch Trans.	100%
CH	Clutch System	100%
DS	Driveshaft & Axle	100%
SS	Suspension System	100%

GI	Steering System	100%
EM	Restraints	100%
EM	Brake System	100%
EM	Body Interior/Exterior	100%
EE	Body Electrical	100%
EE	HVAC	100%
TOC	Table of contents	100%

New content

Internal duplicates

XML



Step 3 →

Apply external duplicates from other projects — MY's and models



GI	General Information	100%
EM	Engine Mechan	100%
EM		60%
EM		15%
EM		12%
EE	Engine Electric	100%
EE		30%
EE		12%
EE		12%

FL	Fuel System 1	100%
FL		60%
FL		12%
FL		12%
EC	Emissions Control 1	100%
EC		100%
EC		100%
EC		100%

MT	Manual Transaxle	100%
MT		60%
MT		100%
AT		100%
AT		100%
DCT	Dual Clutch Trans.	100%
CH	Clutch System	100%
DS	Driveshaft & Axle	100%
SS	Suspension System	100%

GI	Steering System	100%
EM	Restraints	100%
EM	Brake System	100%
EM	Body Interior/Exterior	100%
EE	Body Electrical	100%
EE	HVAC	100%
TOC	Table of contents	100%

New content	Archive content	Internal duplicates	XML
-------------	-----------------	---------------------	-----



WIONET Shop Manual

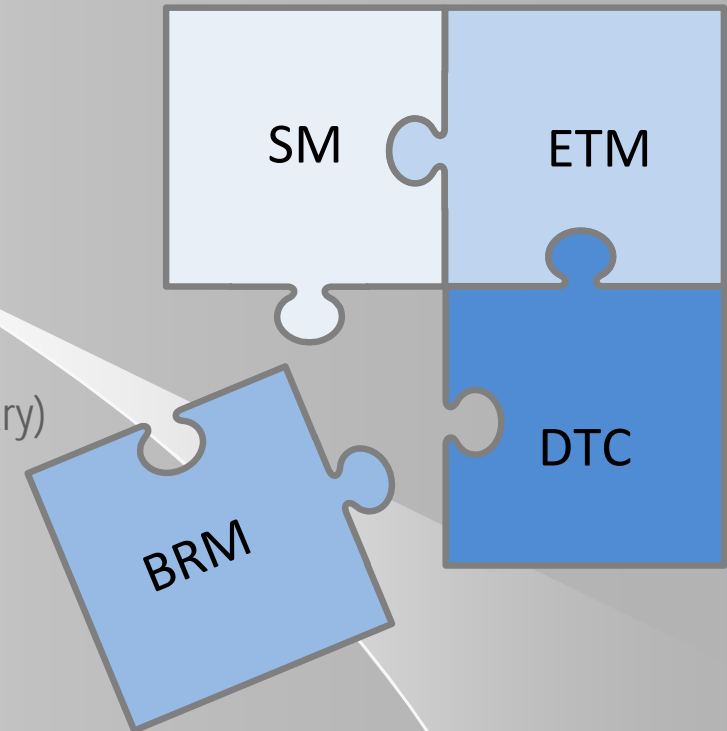
In-house developed Internet portal for publishing technical Aftersales content.

Key facts:

- Developed in-house since 2009
- Started with desktop version, migrated to online version
- Currently used in 5 countries (Korea, Poland, Czech Republic, Slovakia, Hungary)
- 300-400 concurrent users
- Microsoft .NET technology

Key features:

- Hyundai/Kia Global Service Way structure
- Supports all major Workshop Manual publications
- Multilingual content (English, Polish, Czech, Hungarian)
- Supports vector images (PDF, SVG)
- User statistics and activity tracking
- Mobile/responsive version for GDS/KDS devices under development





Supported Workshop Manuals

The screenshot displays the WIONET Shop Manual Online interface. On the left, a sidebar menu lists various vehicle models and manual types, including:

- Passenger
- G 2.0 MPI
- Shop Manual
- Electrical Troubleshooting Manual
- Body Shop Manual
- DTC Guide
- G 2.0 GDI
- 1.7 TCI-U2
- CEL P (U-II)
- cee'd (EU)
- cee'd (JD)
- Magentis (MG)
- Opirus (GH)
- Optima (HEV)
- Optima (TF)
- Overhaul A/T
- Overhaul M/T
- Picanto (SA)
- Picanto (TA)
- Rio (JB)
- Rio (UB)
- Sorento (BL)
- Sorento (XM)
- Soul (AM)
- Soul (PS)
- Sportage (KM)
- Sportage (SL)
- Sportage (SLE)
- Venga (YN)

The main content area is divided into four windows, each displaying a different type of manual:

- SM (Service Manual):** Shows a table of contents and a diagram of a car's front end.
- ETM (Electrical Troubleshooting Manual):** Displays a complex electrical wiring diagram for a vehicle.
- BRM (Body Shop Manual):** Shows a 3D exploded view of a car's body panels.
- DTC (Diagnostic Trouble Codes):** Displays a list of diagnostic trouble codes and their corresponding symptoms.



Part 1 ■ Company Profile



Part 2 ■ Automotive Experience



Part 3 ■ Specialist Translation Services



Part 4 ■ Content Management



Part 5 ■ Added Value





Added Value
Powerful. Strong. Accurate. Effective. Smart.



There's no substitute for complex technical projects than our single source turnkey solutions

- Single source
- Perfect for complex projects
- Turn-key solutions
- Automotive industry professionals
- 25+ years of experience
- Second-to-none localization process



Multilingual Translation and Localization Content Management and Information Technology **Solutions for the Automotive Industry**

For details please contact:

Gilles Laffay ▪ Business Development Manager
WIONET Polska Sp. z o.o. ▪ Sophia Antipolis, France

Direct: +33 4 9312 1828 ▪ Mobile: +33 6 1361 4150

Email: gilles.laffay@wionet.eu ▪ Skype: glaffay

Web: www.wionet.eu